

SILVER

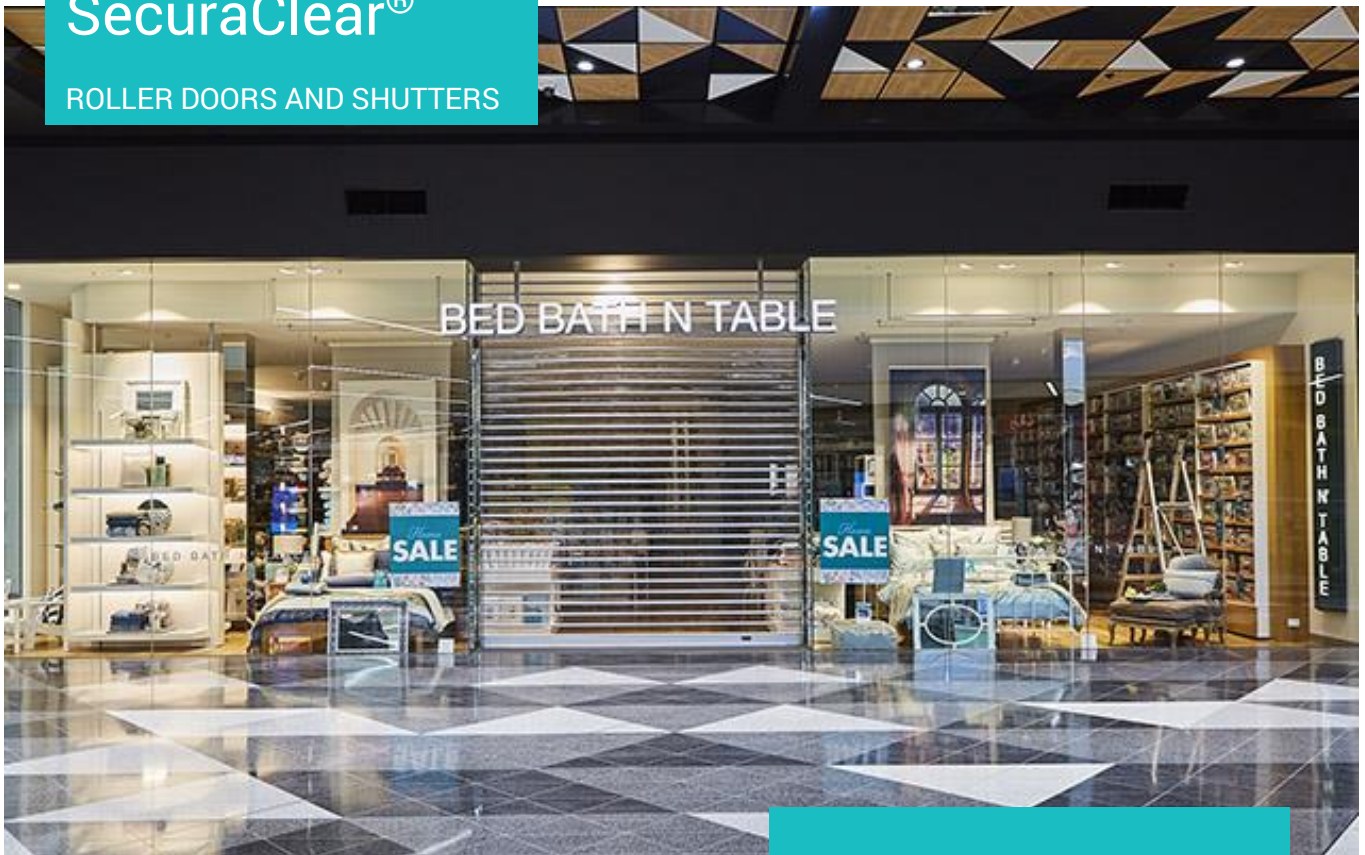
SERVICE CLUB PTY LTD

“ OPENING DOORS FOR BUSINESS ”

The Silver Service team are dedicated to providing responsive, fast and effective service. Our clients depend on us to have their shop fronts and entries opening for business and closing for security.

SecuraClear®

ROLLER DOORS AND SHUTTERS



SecuraClear® polycarbonate and aluminium roller shutters provide a stylish and secure closure. SecuraClear is the perfect solution for:

- Commercial shop fronts
- Shopping centres
- Shop windows
- Retail outlets
- Serveries
- Counters
- Bars
- Hotel kitchens
- Kiosks
- Cafés
- Restaurant roller shutter needs

SecuraClear's interlinked polycarbonate slat curtain design allows visibility with maximum protection.

SecuraClear's roller shutter curtain design is made up of alternating **durable polycarbonate slats**, interlinked with strong extruded **aluminium connecting rods**. This feature provides a robust barrier with **protection from intruders, dust and vermin**, while **permitting visibility and light transmission** through the transparent curtain panels.

CONTROLS

MANUAL OPERATION

SecuraClear roller shutters are fitted with an assist spring within the drum which is the lifting mechanism that allows the roller shutter curtain to be physically raised and lowered by hand. The assist spring balances the weight of the roller shutter curtain and makes operation easier and safer.

Our specially designed spring balanced drum is suitable for **MANUAL OPERATION** shutters up to **3400mm (w) x 3200mm (h)** (or 10 metres per square). These manual hand operated shutters are normally fitted with mid-rail or bottom rail locking devices to keep the shutter secure.

A Silver Service Club Pull Pole is supplied with every manual shutter, to reach the shutter to aid in pulling down in the up position.

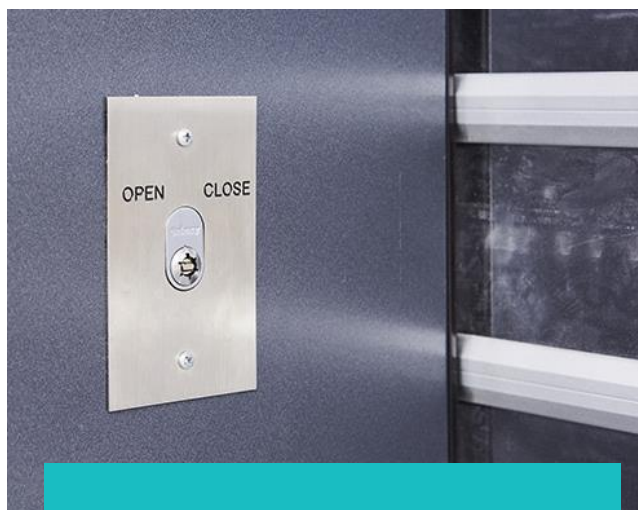
MOTORISED OPERATION

The most convenient way to open and close the SecuraClear roller shutter is to opt for the **240V electric motor option**. A range of electric central or tubular motors and accessories are available from Silver Service Club for roller shutters.

ROLLER SHUTTER ACCESSORIES:

- 100nm or 140nm central inbuilt motors, which allows for easy installation and smaller bulkhead requirements.
- Key switch control (can be keyed alike).
- Emergency push button control.
- Back-up power for 240V mains powered electric roller shutters via an UPS (Uninterruptible Power Supply), so in the event of a power outage you can still open or close your roller shutters.
- Manual override mechanisms as a safeguard to allow manual opening and closing of your roller shutters in case of a power outage.
- Remote control devices.

SECURACLEAR MICRO SLAT ROLLER SHUTTER



Electric central and tubular motors for SecuraClear roller shutters are suitable for all roller shutter sizes up to 6500mm (w) x 3500mm (h) or 23 metres per square.

SPECIFICATIONS

CURTAIN

The SecuraClear roller shutter curtain consists of the following interconnected components:

- **90mm x 1.6mm** thick clear polycarbonate slats; and
- **31mm x 16mm** tough extruded aluminium connecting slats.

Nylon end caps ensure the slats are locked in to place, reduce friction and facilitate smooth operation.

Optional punching of polycarbonate slats on all or part of the curtain with cut-outs of **150mm (w) x 30mm (h)** is available. Space

CURTAIN WEIGHT

Curtain weight is **4.7 kg** per square metre. Add **1.5 kg** per metre for each mid rail or bottom rail.

MAXIMUM WIDTH

MANUAL OPERATION:

3400mm (w) x 3200 (h) or 11.5 metres per square.

MOTORISED OPERATION:

6500mm (w) x 3500 (h) or 23 metres per square.

Removable mullions and removable side guides will NOT be installed with motorised shutters, due to operational and safety issues. Only fixed side guides will be used

COLOURS

The standard finish for all visible aluminium components on SecuraClear roller shutters is a **clear anodised matt finish**. Optional powder coating with specified Dulux or Interpon colours is available.

SIDE GUIDES

CHOICE OF ROLLER SHUTTER GUIDES:

- Standard **54mm x 32mm** clear anodised guides (available for use without a pelmet box).
- **76mm x 32mm** clear anodised guides (suitable for face-fit or when an optional pelmet box is fitted).
- **90mm x 32mm** clear anodised guides (recommended for manual operated doors when higher security is required or the door is exposed to outside elements).
- **95mm x 28mm** clear anodised guides (recommended for motorised operated doors when higher security is required or exposed to outside elements).

BOTTOM RAIL

80mm x 17mm clear anodised bottom rail included as standard. There is also an option of an aluminium foot stiffener (60mm deep) which is fitted under the bottom rail and is suitable for resting on bulkheads or counter tops if required.

LOCKING

The bottom rail houses a star keyed lock, in the centre position within the bottom rail extrusion. The lock operates **25mm x 3mm** aluminium flat bars which, when in the locked position, secure the Locking Bars into the side guides. The standard lock allows operation from both outside and inside and can be keyed alike to multiple doors.

SPRING BALANCED DRUM

The drum is manufactured from 229mm diameter, spiral ducted tube, with steel end caps. There are fully enclosed heavy duty bearings which rotate around a 34mm steel shaft with next to no friction. The shaft is fitted with helical torsion springs designed to counterbalance the curtain weight.

SMOOTH SAILING WITH SILVER SERVICE

As part of our commitment to providing superior service, we ensure that our clients will be smooth sailing with the Silver Service crew. **An After Hours Emergency number, 0401 333 776**, is offered to connect you directly to one of our technicians or sales staff to assist you anytime, anywhere.



ADDRESS: 25A/1-3 ENDEAVOUR ROAD
CARINGBAH NSW 2229
PHONE: 02 9531 8542
AFTER HOURS: 0401 333 776
EMAIL: service@silverserviceclub.com.au